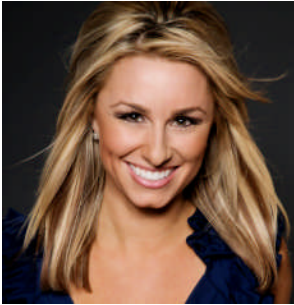


Press Release for Mardi Gras

FOR IMMEDIATE RELEASE: (January 25, 2010)

Fox 10's Alexis DelChiaro brings style and flair to the Epilepsy Foundation of Arizona Mardi Gras Gala



Description: Naming of Master of Ceremonies Epilepsy Foundation Gala

Phoenix, AZ, January 25, 2010 – The Epilepsy Foundation of Arizona's annual Mardi Gras Gala has added a familiar face on what will be a magical night. Alexis DelChiaro of Fox10 will serve as the Master of Ceremonies that night. The event is on February 16, 2010 at the Arizona Science Center.

Alexis brings a wealth of experience with her to the Valley; she's been a news anchor, a weather anchor, reporter, sports reporter and news producer. She joins FOX 10 with years of experience in Yuma, Arizona and Santa Barbara, California. A graduate of the University of California in Santa Barbara, Alexis majored in communications and minored in Spanish.

Alexis told us, "I am extremely honored to be emceeding this year's annual Mardi Gras Gala. The Epilepsy Foundation of Arizona does wonderful work in our community and we are all excited to raise money and awareness for such a worthy cause."

The event is on February 16, 2010 at the Arizona Science Center and will feature New Orleans style cuisine and entertainment, Live and Silent Auctions and a performance from national recording artist Katrina Carlson. The Events' Honoree is Larry Sheffield, Chairman of Goldwater Bank. For more information regarding tickets or sponsorships, please contact the Epilepsy Foundation of Arizona office at 602-406-3581.

The mission of the Epilepsy Foundation of Arizona is to ensure that people with seizures are able to participate in all life experiences; and will prevent, control and cure epilepsy through services, education, advocacy and research. Proceeds from this event will be used to support local programs and services.

Contact Information:

Eddie Nichols, Epilepsy Foundation of Arizona
602-406-3581
Eddie.nichols@chw.edu
www.epilepsyfoundation.org/arizona

###